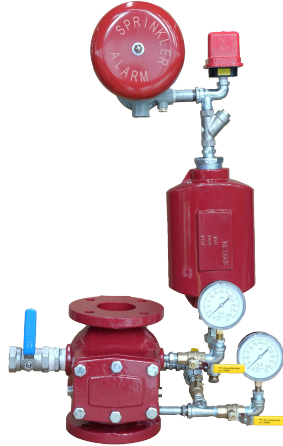
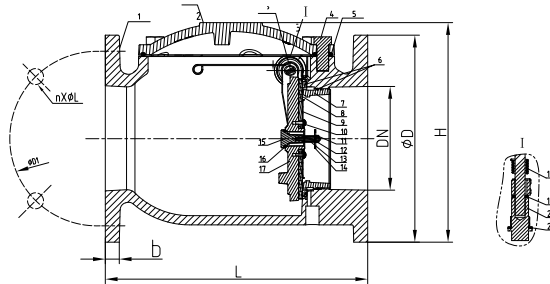


## PRODUCT FEATURE



1. THE WET ALARM VALVE IS A WATER SPRAY SYSTEM THAT ONLY ALLOWS WATER TO BE INJECTED IN FROM ONE DIRECTION, TOGETHER WITH OTHER COMPONENTS SUCH AS PRESSURE SWITCH, WATER FLOW INDICATOR, SPRINKLER ETC, IS A WIDELY USED FIXED FIRE EXTINGUISHING SYSTEM. THE PIPE NETWORK OF THE SYSTEM IS FULL OF PRESSURIZED WATER AND IS IN STANDBY WORKING STATE. WHEN A FIRE BREAKS OUT IN A PROTECTED AREA, THE TEMPERATURE OF THE AREA RISES, THE TEMPERATURE SENSITIVE ELEMENT OF THE SPRINKLER IS BROKEN, THE NOZZLE SPRAYS WATER, AND THE AUTOMATIC SYSTEM STARTS TO SPRAY WATER DIRECTLY TO THE FIRE. AT THE SAME TIME, THE ALARM SIGNAL IS ISSUED IN THE OCCURRENCE AREA, WHICH HAS ACHIEVED THE PURPOSE OF ALARMING, EXTINGUISHING AND CONTROLLING FIRE.

2. THE WET ALARM VALVE DEVICE IS SUITABLE FOR PLACES WITH AN AMBIENT TEMPERATURE OF  $4^{\circ}\text{C} - 70^{\circ}\text{C}$ , USUALLY INSTALLED IN PLACES WITH FIRE HAZARDS, INCLUDING WAREHOUSES, HOTELS, SHOPPING MALLS, HOSPITALS, THEATERS, OFFICE BUILDINGS, CONFERENCE CENTERS, ESPECIALLY SUITABLE FOR HIGHRISE BUILDINGS AND UNDERGROUND ENGINEERING.



## MATERIAL SPECIFICATION

Part No.	Part	Standard Specification
1	Valve Body	ASTM A536, 65-45-12
2	Bonnet	ASTM A536, 65-45-12
3	Pin	AISI 304
4	Hex Bolt	Carbon Steel Zinc Plated
5	Body Gasket	EPDM
6	O-Ring	NBR
7	Seat	C83600
8	Gasket	EPDM
9	Disc Gland	AISI 304
10	Slotted Screw	AISI 304
11	Hexagonal Nut	AISI 304
12	Adjusting Screw	AISI 304
13	Core Tube	AISI 304
14	Core Board	AISI 304
15	Disc Core	C89833
16	O-Ring	NBR
17	Disc	C83600
18	Spring	AISI 304
19	Sealing Fillet Gasket	PTFE
20	Sealing Plug	AISI 304
21	Sealing Fillet Gasket	PTFE

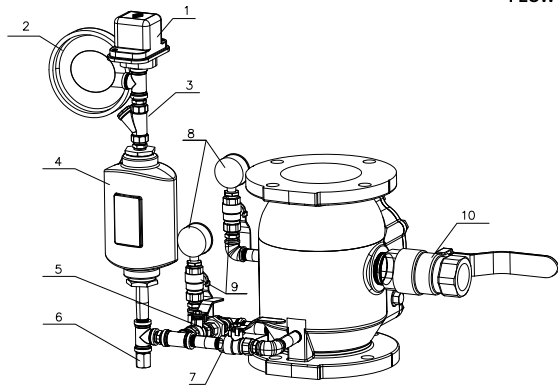
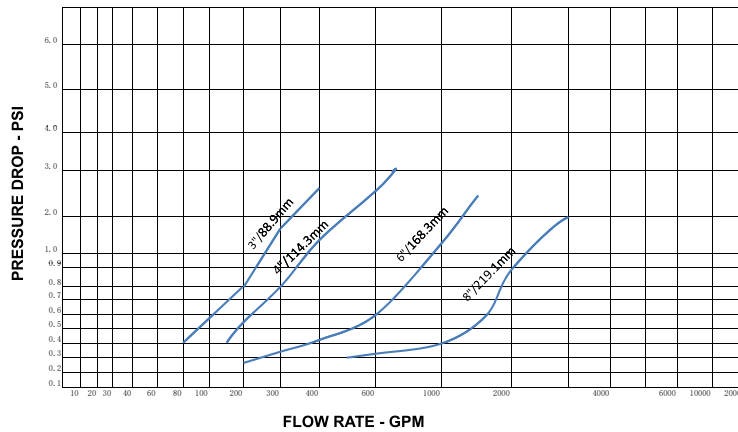
Note: For special material request other than standard specification, please indicate clearly on the inquiry or order list.



# ALARM CHECK VALVE GMC-ACV-FF

## GLOBE MECHANICAL CONTROL LLC.

DN		Dimensions(mm)					
Inch	mm	H	L	D	DI	b	n- φ L
3"	80	235	241	191	152.4	19	4- φ 19.1
4"	100	241	292	229	190.5	24	8- φ 19.1
6"	150	298	356	279	241.3	25.5	8- φ 22.2
8"	200	352	495	343	298.5	28.5	8- φ 22.2



Outside Part			
Part No.	Part	Part No.	Part
1	Pressure Switch	6	Drip Valve
2	Alarm	7	Alarm Ball Valve
3	Strainer	8	Pressure Gauge
4	Retard Chamber	9	Pressure Gauge Ball Valve
5	Test Ball Valve	10	Drain Ball Valve

Weight – lb. (kg)

SIZE	D65	D80	D100	D150	D200	D250
Weight	10.1255	13.6336	18.8377	29.7194	50.1451	63.7508

### NAMEPLATE

