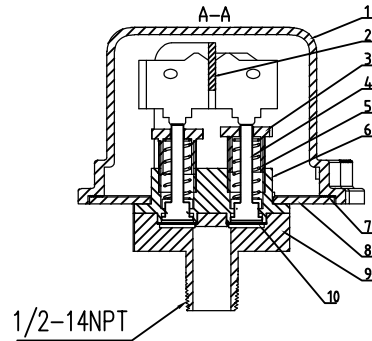
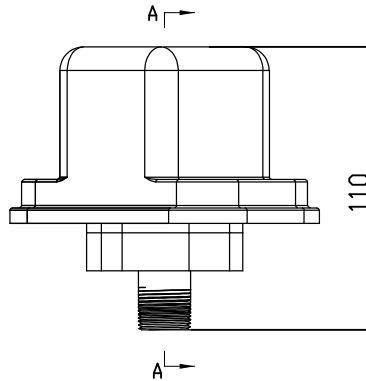


PRODUCT FEATURE

1. **DOUBLE MICRO SWITCH DESIGN:** GREATLY REDUCE SIGNAL ERRORS CAUSED BY MICRO SWITCH MALFUNCTION, MULTIPLE SIGNAL TRANSMISSION CAN MEET MORE CUSTOMER NEEDS;
2. **ADJUSTABLE ALARM PRESSURE:** CAN MEET THE ACTUAL WORKING CONDITIONS REQUIREMENTS OF CUSTOMERS;
3. **THE DUAL PRESSURE SENSING DEVICE CAN SET ALARM PRESSURES SEPARATELY TO ACHIEVE HIGH AND LOW PRESSURE ALARMS;**
4. **PROTECTION AND SAFETY LEVEL: IP65,** ACHIEVING DUST PROOF AND WATER PROOF TO ENSURE THE SAFETY OF THE INTERNAL STRUCTURE.
5. **THE PRODUCT HAS PASSED UL/FM CERTIFICATION AND QUALITY IS GUARANTEED.**



MATERIAL SPECIFICATION

| Part No. | Part | Standard Specification | Options |
|----------|------------------------|------------------------|----------|
| 1 | Outer Shell | ADC12 | |
| 2 | Micro Switch | | |
| 3 | Regulating Accessories | PA66+GF30 | |
| 4 | Stem | PA66+GF30 | |
| 5 | Compression Spring | 65# | |
| 6 | Sealing Washer | PA66+GF30 | |
| 7 | Back Shell | ADC12 | |
| 8 | Pressure parts | PA66+GF30 | |
| 9 | Pressure Diaphragm | EPDM | |
| 10 | Micro Stents | Carbon Steel Q235 | AISI 304 |

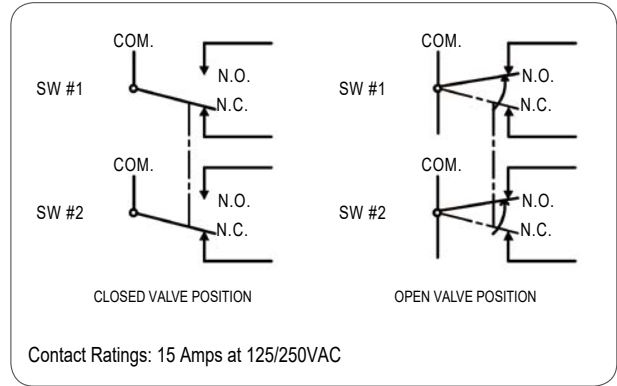
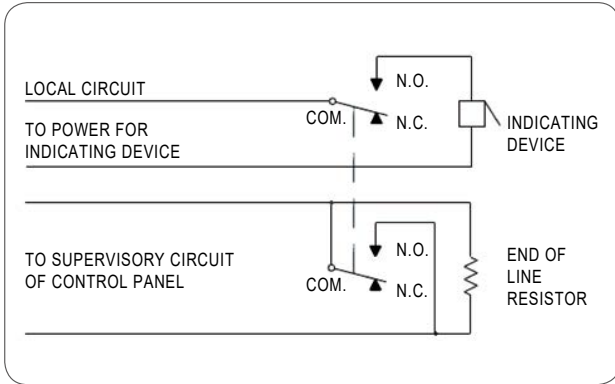
Note: For special material request other than standard specification, please indicate clearly on the inquiry or order list.



PRESSURE SWITCH GMC-PS-10

GLOBE MECHANICAL CONTROL LLC.

TYPICAL ELECTRICAL CONNECTIONS



NAMEPLATE

