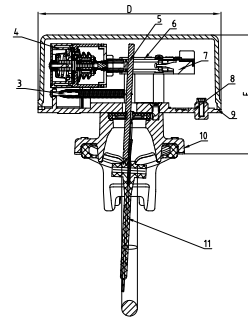
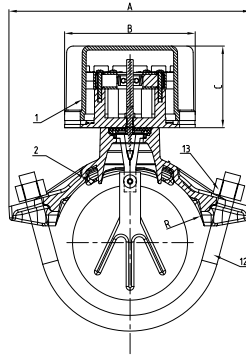


PRODUCT FEATURE



1. **ADJUSTABLE DELAY FUNCTION**
ADJUST WITH ROTATING SWITCH, ACCURATE ADJUSTABLE TIME WITHIN 0~90 SECONDS, HIGH RELIABILITY.
2. **AIR DELAY DEVICE WITH MINIATURE BEARING**
TIME CONSISTENCY AND RELIABILITY ARE ASSURED
3. **ADJUSTABLE SPRING DESIGN**
CONVENIENT SENSITIVITY ADJUSTMENT, EASY MAINTENANCE.
4. **DOUBLE MICRO SWITCH DESIGN**
ONE END CAN BE USED TO OPERATE THE CENTRAL CONTROL ROOM, AND THE OTHER END CAN BE USED TO CONNECT THE ALARM APPARATUS.
5. **SURFACE TREATMENT**
RED EPOXY COATING, HIGH CORROSION RESISTANCE PERFORMANCE



MATERIAL SPECIFICATION

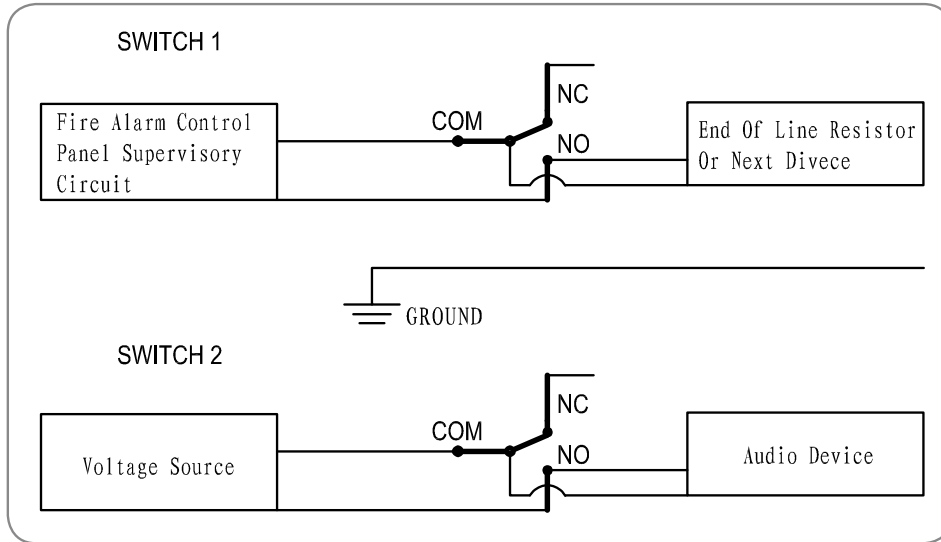
Part No.	Part	Standard Specification
1	Cover	ASTM B85-96 383.0E
2	Body Gasket	EPDM
3	Spring	AISI 304
4	Air Delay Device	PC GV3410R
5	Stem Seal Assembly	SS304+NBR
6	Connecting Rod	POM 500P
7	Switch Assembly	PC GV3410R
8	Connection Plate	ASTM B85-96 383.0E
9	Connection Plate Seal	NBR
10	Body	ASTM A536, 65-45-12
11	Vane Assembly	PE
12	U-Bolts	Carbon Steel Zinc Plated
13	Nuts	Carbon Steel Zinc Plated

Note: For special material request other than standard specification, please indicate clearly on the inquiry or order list.



WATER FLOW INDICATOR GMC-WFIS GLOBE MECHANICAL CONTROL LLC.

WIRING DIAGRAM



DN		Dimensions(mm)							
Inch	mm	R	A	B	C	D	E	Hole Dia.	Certificate
2"	50	60.3	116	100	63	140	83.5	30	UL/FM
2.5"	65	73	120	100	63	140	83.5	30	UL/FM
2.5"	65	76.1	122	100	63	140	83.5	30	UL/FM
3"	80	88.9	145	100	63	140	94	51	UL/FM
4"	100	114.3	185	100	63	140	94.5	51	UL/FM
5"	125	139.7	212	100	63	140	94.5	51	UL/FM
5"	125	141.3	212	100	63	140	94.5	51	UL/FM
6"	150	165.1	254	100	63	140	95	51	UL/FM
6"	150	168.3	254	100	63	140	95	51	UL/FM
8"	200	219.1	298	100	63	140	95	51	UL/FM
10"	250	273.0	381	100	63	140	97.5	70	—

Note: Size 10" is not UL/FM listed.

Weight – lb. (kg)

SIZE	D73	D89	D114	D168	D219
Weight	0.331	0.53	0.6836	1.0389	1.4425

NAMEPLATE

